

# PARALLEL CONTRACTING

## Company Profile



Introduction, Approach, Vision Line of Work, Classification, Management, Portfolio

**Webpage: [parallel-contracting.com](http://parallel-contracting.com)**

## Contents

<b>1.INTRODUCTION</b>	<b>3</b>
<b>2.PARALLEL APPROACH</b>	<b>3</b>
<b>3.VISION, MISSION AND CORE VALUES</b>	<b>3</b>
Our Vision	
Our Mission	
Our Core Values.	
<b>4.LINE OF WORK</b>	<b>4</b>
<b>5.QUALIFICATIONS AND RECOMMENDATIONS</b>	<b>4</b>
<b>6.MANAGEMENT DIRECTORY</b>	<b>5</b>
<b>7.PORTFOLIO</b>	<b>6</b>
<b>i. CLIENTS</b>	<b>6</b>
• LEBANON	
• OMAN	
• UAE	
• QATAR	
<b>ii. PERSONNEL</b>	<b>7</b>
<b>iii. OFFICES:</b>	<b>7</b>
Beirut - Lebanon: (Head office)	
Zahle – Bekaa: (Regional and Main office)	
Dedde – Koura: (Regional Site Office)	
<b>iv. WEBPAGE</b>	<b>7</b>
<b>v. Projects Status</b>	<b>8</b>
i. Completed Projects in Lebanon	
ii. On-going Projects in Lebanon	
iii. Completed Projects in GCC countries	
<b>vi. Certificates of qualifications</b>	<b>11</b>
<b>vii. Certificate of financial capability</b>	<b>16</b>
<b>viii. Photos</b>	<b>17</b>

## **PARALLEL CONTRACTING**

**1. INTRODUCTION** PARALLEL is a group of companies in the field of Project management & Contracting founded by experienced partners in Oman in 2009. Later and in 2011, a new entity was established in Beirut, Lebanon. Since its inception in Oman and Lebanon, the group has grown significantly and expanded its operation to other GCC countries.

### **2. PARALLEL APPROACH**

Whenever and wherever project opportunities arise, locally, regionally or overseas, we offer the experience, manpower, problem-solving skills and corporate commitment to deliver absolute quality of work and service.

As a construction partner we don't just work for you, we work with you, serving as an extension of your staff. It's an attitude that ensures flexibility in accommodating your needs even when those needs involve unexpected changes.

Our commitment is to hard work, integrity and dedication to the needs of our clients. We understand that value is a major Client concern, we know as well the importance of providing a project which is not only cost effective but of enduring quality.

PARALLEL's Clients receive the benefit of its streamlined Operation policy, they have direct access to its people without unnecessary layers of bureaucracy. On site experienced management can work directly with our Clients to bring about the best solution to a problem or prevent one from happening without needless delays, they can elaborate value engineering methods that can contribute to budget savings.

### **3. VISION, MISSION AND CORE VALUES**

#### **Our Vision...**

Parallel's vision is to become a distinguished prime contractor delivering projects and services in MENA countries. We are a dedicated team striving to bring growth to the community, and assist our clients in making their ideas become a reality. To that end, Parallel's motto is 'Your Construction Partner'.

#### **Our Mission...**

Parallel is committed to building long-term relationships based on integrity, performance, value, and client satisfaction.

It will continue to meet the changing needs of its clients with quality services delivered by the highly qualified people with Zero Accidents target.

#### **Our Core Values...**

Parallel subscribes to the following core values:

- We believe that Transparency, Accountability, and Discipline shall be instilled in our business.
- We believe that our commitment to Quality, HSE is uncompromisable.

-We believe in service excellence through working hard for our clients to ensure the best prices and best quality work from our tradesmen and best subcontractors; thus meeting and even exceeding client expectations

-We believe in preventing all occupational accidents by promoting Safety awareness and consciousness in employees and through implementing the necessary Safety procedures for such purposes and control procedures to prevent off duty accidents.

-We believe in adopting a stringent commitment to the environment we live in.

-We believe that honesty and integrity shall be instilled in all we do

#### **4. LINE OF WORK**

PARALLEL Group encompasses a diverse range of sectors which include:

a. Infrastructure

- ◆ Bridges & Underpasses, Road works
- ◆ Different type of networks such as Water supply, Irrigation, Drainage and Sewerage schemes, Oil and Gas, Electrical Telephone and Fiber optic
- ◆ Waste Water Treatment Plants Construction and Rehabilitation.

b. Superstructure

- ◆ Concrete repair and structural strengthening
- ◆ Buildings construction, finishing and rehabilitation.
- ◆ Hotels, Hospitals, Malls and Schools construction and rehabilitation.
- ◆ Solar PV systems.

#### **5. QUALIFICATIONS AND RECOMMENDATIONS**

•First Grade Contractor before the Ministry of Power & Water Resources in Lebanon (Decree No.201 dated 12/12/2011)

•First Grade Roads and Bridges Contractor before the Ministry of Transport & Public Works in Lebanon (Decree No.173 dated 19/10/2012)

•First Grade Building Construction Contractor before the Ministry of Transport & Public Works in Lebanon (Decree No.159 dated 17/03/2016)

•Second Grade Building Construction Contractor before the Lebanese Council for Development and Reconstruction (Decision 743/2016/A dated 7/11/2016)

•Second Grade Civil Works Contractor before the Lebanese Council for Development and Reconstruction (Decision 743/2016/A dated 7/11/2016)

•SIKA Recommended Applicator for Concrete Repair and Structural Strengthening (13/8/2013)

•Prequalified to bid on WISE tenders with USAID contractor CHEMONICS (23 July 2013)

## 6. MANAGEMENT DIRECTORY

- **Partners / Board Members**

William DEBS,	Chairman / Chief Executive
Khalil SAKR,	Officer Operation Officer
Bechara NSEIR,	Business Development Officer
Michel SAYAH,	International Operations Officer

- **Senior Staff**

Elie AWAD,	Senior Projects Manager
George KHOURY,	Senior Procurement
Charbel HARIKA,	Manager Project Manager
Nizar MONZER,	Project Manager HSE
Issa TOUMA,	Manager

- **Advisors**

Youssef ATIE,	Legal Advisor
Jean NSEIR,	Financial
	Advisor

- **Bankers**

BSL Bank  
Audi Bank  
Arab Bank  
BLF Bank  
Fransa  
Bank

- **Auditors**

AXIOM - Imad Haddad and Partners

HLB Fiducia



## 7. PORTFOLIO

### i. CLIENTS

- LEBANON

- 1 Council for Development and Reconstruction
- 2 Ministry of Energy and Water
- 3 Ministry of Telecommunications 4- Ministry of Transport
- 5- Ministry of Education and Higher Education (MEHE) 6- Beirut Municipality
- 7 Water Establishment in Lebanon (BMLWE, NLWE, SLWE, BWE).
- 8 Mobile Interim Companies 1 and 2 (ALFA and TOUCH). 9- Lebanese American University (LAU)
- 10- American University of Beirut (AUB) 11- World Bank
- 12 USAID / CHEMONICS / DAI
- 13 United Nations Agencies (UNIFIL, UNDP, UNICEF, etc.)
- 14 NGOs (AVSI, WAR CHILD HOLLAND, TERRE DES HOMMES, NORWEGIAN REFUGEE COUNCIL, IOCC, etc.)
- 15 DERVICHE HADDAD MIDDLE EAST SARL
- 16 GIZ (Deutsche Gesellschaft für Internationale Zusammenarbeit GmbH)
- 17 Private and official distinguished clients including several municipalities.

- OMAN

- 18 Al Malla National Trading
- 19 Monteadriano Middle East LLC 20- CCC/TAV

- UAE

- 21 Spring Flower LLC
- 22 TARGET – Abou Dhabi

- QATAR

- 23 Al Mana Services
- 24 GET (General Engineering Technologies w.l.l)

## ii. PERSONNEL

<u>Description</u>	<u>Total at present</u>
Head Office Management	1
Administration and Accounting	1
Procurement	1
Total	3
Project Managers	4
Design Engineer	1
Planning /Scheduling Engineer	1
QS/Estimator	1
Total	6
Site Engineers	2
Safety Senior Officer	1
Foreman	6
Total	9
Skilled Labor*	21
Semi-skilled Labor*	21
Unskilled Labor*	35
Total*	77
Grand Total	126

NB: Labor force numbers may vary depending on site requirements

## iii. OFFICES

### Beirut - Lebanon: (Head office)

Zalqa - Metn - Saydeh Street, Samarani Building, Bloc B, 6<sup>th</sup> floor

Telephone: +961 (1) 880501, (3)558894- Fax +961 (1)880502

Email: [info@parallel-contracting.com](mailto:info@parallel-contracting.com)

### Zahle – Bekaa: (Regional and Main office)

Haouch El Oumara, Main Rounabout

Telephone: +961(8)810631

Email: [info@parallel-contracting.com](mailto:info@parallel-contracting.com)

### Dedde – Koura: (Regional Site Office)

Dedde, Mostapha Building

Email: [info@parallel-contracting.com](mailto:info@parallel-contracting.com)

## iv. WEBPAGE:

[parallel-contracting.com](http://parallel-contracting.com)

## v. Projects Status

### i. Completed Projects in Lebanon

#### PARALLEL CONTRACTING

#### PROJECTS COMPLETED TILL 30 APRIL 2022 IN LEBANON

No.	Project	Project Location	Owner	Client	Consultant	Value ( LL)	Value ( \$)	Year	Type of Works
I- Projects Completed in Lebanon									
1	Installation of Water Supply Line from Dbayeh to Bauchrieh	Mount Lebanon	BMLWE	BMLWE	Eng. Antoine Zoghbi Mobile: 03/658636	2,389,052,050	-	2011	Water Supply Lines
2	Rehabilitation of Irrigation Channels in Mount Lebanon Area	Mount Lebanon	BMLWE	BMLWE	BMLWE	158,435,200		2011	Irrigation Channels
3	Rehabilitation of Irrigation Channels in Bouar	Jbeil	MEW	MEW	MEW	57,392,500		2013	Irrigation Channels
4	Jal el Baher stairways rehabilitation	Beirut	Beirut Mun.	Beirut Mun.	Beirut Mun.	142,437,500		2013	Rehabilitation of stairs
5	Construction of Alali, Mar Mama, Mrah Hajj and Rasha water reservoirs	Batroun, North Lebanon	NLWE	MEW	GETI	449,900,000		2013	Water Supply Networks
6	Construction of Tihoum, Kibba, and Kfar Abida water Reservoirs	Batroun, North Lebanon	NLWE	MEW	GETI	423,912,500		2013	Water Supply Networks
7	MOT Justice Concrete Repair	Beirut	MOT	MIC1/Alfa	KREDO - Tel: 01/204957		350,000	2013	Building Construction/Concrete Repair
8	Rehabilitation of Irrigation Channels in Kaftoun - Koura	Koura, North Lebanon	NLWE	MEW	MEW	60,967,500		2013	Water Supply Networks
9	Paving of Private Villa yards in Amchit	Amchit, Jbeil, Mount Lebanon	Private Owner	Private Owner	Eng. Antoine Karam		15,000	2013	Road Works
10	Touch Headquarter Building - Chiyah No. 1633 - Concrete Works	Chiyah, Baabda, Mount Lebanon	MOT	MIC2/ Touch	Dar Al Handasah - Taleb		1,934,900	2013	Building Construction
11	Haouech El Oumara Water Distribution Network	Zahle, Bekaa	BWE	USAID/ CHEMONICS	CHEMONICS/ KREDO	7,760,798,750		2014	Water Supply Network
12	Maintenance works at AUB campus	Beirut	AUB	AUB / Physical Plant	AUB / Physical Plant		23,000	2014	Finishing Works
13	Ablah Reservoir Rehabilitation and Terbol Reservoir Construction	Ablah, Zahle, Bekaa	BWE	USAID/ CHEMONICS	CHEMONICS	204,000,000		2015	Water Supply Network
14	Dekwaneh #193 - Abdo Residence	Dekwaneh, North Metn	Mr. Mike Abdo	Mike Abdo	GES		274,605	2015	Building Construction
15	Deir El Ghazal Sewers	Deir El Ghazal, Zahle, Bekaa	MEW	MEW Tel: 01/565100	MEW Engineer Moufid Dhaini Tel: 01/565100	190,944,000		2016	Sewers
16	Ferzol Water Network	Ferzol, Zahle, Bekaa	Ferzol Municipality	MEW Tel: 01/565100	Liban Consult Engineer Nakhle Daoud Mobile: 03/340622	504,368,000		2016	Water Supply Network
17	Construction of Qorsaita Bridge, Dinnieh, North Lebanon	Dinnieh, North Lebanon	CDR	Derviche Haddad Middle East SARL	Dar Al Handasah - Taleb		512,000	2019	Bridge Construction
18	Construction of Generator Room, Fuel Tank Area and Related Works at UNIFIL House in Baabda	Baabda, Mount Lebanon	UNIFIL	UNIFIL	UNIFIL Engineer Alaa Chehade Mobile: 03/657200		60,500	2016	Electromechanical Works/MEP
19	Rehabilitation of Public Schools at Pre School level in Lebanon - Lot 5C (South and Naabatiyeh)	Toura, Wadi Jilo, Bazourieh, Deir Qanoun Ras Ain, Aitaroun, Kabrikha, Haris, Borj Chemali	MEHE	MEHE/World Bank Tel: 01/772669	SPECTRUM Engineer George Kahwaji Mobile: 03/920043		864,211	2016	Building Construction/ Schools Rehabilitation
20	671 Zalka Office Building - Concrete Works	Zalka, North Metn	GES	GES	GES		125,000	2016	Building Construction
21	Construction of water distribution network in the villages of Ain El Remeneh - Bmekine - Ain El Saydeh and Bkheshtai, Aley, Mount Lebanon	Ain El Remeneh - Bmekine - Ain El Saydeh and Bkheshtai, Aley, Mount Lebanon	BMLWE	UNICEF	World Engineering and Technology (WET) Tel: 04/524221		652,257	2017	Water Supply Network
22	Construction of Water Distribution Network in the villages of "Kfaaramay, Chartoun"	Kfaaramay and Chartoun, Aley, Mount Lebanon	BMLWE	UNICEF	World Engineering and Technology (WET) Tel: 04/524221		424,878	2017	Water Supply Network
23	Supply and Installation of Water Meters and Chlorinators - BWE	Zahle District, Bekaa	BWE	USAID/ DAI	KREDO Tel: 01/204957	1,552,059,152		2018	Water Supply Facilities
24	Rehabilitation of 2 Schools in North Lebanon	Tripoli and Aakar, North Lebanon	MEHE	War Child - Holland Tel: 01/801725	Eng. Mario Jabbour		232,988	2018	Building Construction/ Schools Rehabilitation
25	Majdleia Water Distribution Networks	Majdelyia, Aley, Mount Lebanon	BMLWE	MEW	MEW -Engineer Rana Ahmadi Tel: 01/565100	835,635,000		2018	Water Supply Network
26	Rehabilitation of 4 Schools in Mount Lebanon	Fidar, Sad El Bausherieh, Aley and Gharifi, Mount Lebanon	MEHE	Terre Des Hommes - Italy Tel: 01/282387	Architect George Najm		304,377	2019	Building Construction/ Schools Rehabilitation
27	Irrigation Channels	Irrigation Channels	Irrigation Channels	Irrigation Channels	Irrigation Channels	Irrigation Channels	Irrigation Channels	Irrigation Channels	Irrigation Channels



## PARALLEL CONTRACTING

### PROJECTS COMPLETED TILL 30 APRIL 2022 IN LEBANON

28	Maaroub Elevated Tank	Maaroub, South Lebanon	SLWE	UNDP Tel: 01/962500	UNDP Tel: 01/962500		180,649	2019	Water Supply Networks including 500 m3 elevated reservoir
29	Qudra - Resilience for Syrian Refugees, IDPs and host communities in response to the Syrian and Iraqi Crisis (Contract No. 83294006) – Lot II Rehabilitation of 4 public school buildings in Bekaa and South Lebanon	Majdel Anjar, Haoar Taala and Khodr at Bekaa and Bint Jbeil at South Lebanon	MEHE	GIZ Tel: 01/587701	BAUEN Architect Khalil Nader Tel: 01/200911		1,317,085	2019	Building Construction/ Schools Rehabilitation
30	Equipping Zahle Stations	Zahle, Lebanon	BWE	UNICEF	World Engineering and Technology (WET) Tel: 04/524221		2,071,386	2019	Pumping Station, Well Equipping and Reservoirs- Water Supply Station
31	ELCAPS- Rehabilitation of 4 schools in North Lebanon	Kfar Aaka, Haref Siyad, Karm Asfour and Sir schools	MEHE	GIZ Tel: 01/587701	VERTEX		326,847	2019	Building Construction/ Schools Rehabilitation
32	Kefraya Sewage Treatment Plant - Phases I and II	Kefraya, West Bekaa	Chateau Kefraya	Chateau Kefraya	ELARD		114,580	2019	Construction of Wet Land
33	Construction of Artaz, Fatahat and Kfar Chlaman Water Reservoirs	Batroun, North Lebanon	NLWE	MEW	MEW, Eng Imad Miniim	257,113,050		2014	Water Supply Networks
34	Deir El Ghazal Reservoir, Well Equipping and Supply Line	Deir El Ghazal, Zahle, Bekaa	BWE	IOCC	Eng. Ziad Abdul Dayim		245,139	2020	Construction of Ground Reservoir, Well Equipping and Supply Line
35	Rehabilitation of Jradeh Pumping Station and Upgrading of Water Facilities in El Qaleaa Area in Koura Caza for (NLWE )	Koura, North Lebanon	NLWE	USAID/DAI	World Engineering and Technology (WET) Tel: 04/524221		3,191,737	2020	Water Supply Network, Elevated Reservoir, Pumping Station, DMAs, Customer Meters
36	UPGRADE OF POTABLE WATER FACILITIES IN AAYOUN, RACHAINE AND RAHBEH VILLAGES	Zgharta, Aakar and Bechari, North Lebanon	NLWE	USAID/DAI/ARISON	ELARD/WET		454,457	2021	Water Supply Network, Reservoir, Pumping and Well Stations, Control Rooms
37	Abou Ali Sewer Conveyor	Zgharta and Tripoli, North Lebanon	MEW	UNICEF	WET		3,499,724	2020	Sewage Networks
38	Rehabilitation of Jradeh Pumping Station and Upgrading of Water Facilities in El Qaleaa Area in Koura Caza for (NLWE )- Repair of Jradeh - Fiaa Line	Koura, North Lebanon	NLWE	USAID/DAI	World Engineering and Technology (WET) Tel: 04/524221		358,223	2020	Water Supply Networks
39	Construction of Irrigation Pipes in Ras Baalbeck Village, Bekaa	Baalbeck, Bekaa	Municipality of Ras Baalbeck	USAID/Chemonics	BUREAU TECHNIQUE POUR LE DÉVELOPPEMENT SAL / BTB		214,610	2021	Irrigation Network
40	Maintenance of water network lines in BWE : Berbara line	Zahle, Bekaa	BWE	UNICEF	UNICEF		177,513	2021	Water Supply Networks
41	Pipelining and Civil Works in Hay El Selum	Hay El Selum, Beirut Southern Suburbs	Union of Southern Suburbs Municipalities	UNICEF	World Engineering and Technology (WET) Tel: 04/524221		808,798	2021	Sewage Networks
42	Connection of Dahieh Reservoir, Dahieh Reservoir 400-500 Supply Line	Ouzaii, Beirut Suburbs	BMLWE	UNICEF	World Engineering and Technology (WET) Tel: 04/524221		493,424	2021	Water Supply Networks
43	Distribution of Potable Water Network - in Ouzai Region from Burj El Barajneh From Reservoir 3500 m3 Capacity	Ouzaii, Beirut Suburbs	BMLWE	UNICEF	World Engineering and Technology (WET) Tel: 04/524221		770,816	2021	Water Supply Networks
44	Construction of a retaining wall in Nabi Ayla, Bekaa	Nabi Ayla, Bekaa	Municipality of Nabi Ayla, Bekaa	USAID/Chemonics	BUREAU TECHNIQUE POUR LE DÉVELOPPEMENT SAL / BTB		172,424	2022	Road Works and Retaining walls
45	Rehabilitation Works for Mahrouna Elementary Public School - CERD 1251	Mahrouna, South Lebanon	Ministry of Education (MEHE)	Norwegian Refugee Council (NRC)	Norwegian Refugee Council (NRC)		190,823	2022	Building Construction/ Schools Rehabilitation
Total Value of completed projects in Lebanon						14,729,902,152	20,361,950		

## ii. On-going Projects in Lebanon

PARALLEL CONTRACTING ONGOING PROJECTS ON 30 APRIL 2022										
No.	Project	Owner	Client	Consultant	Value ( \$ )	Execution Period	Expected time to complete works	Year	Type of Works	Status
1	The Rehabilitation of Aitanit Wastewater Treatment Plant and Sludge Management Upgrade.	Bekaa Water Establishment	USAID/Chemonics	Earth Link and AdvancedResources Development ELARD	1,199,361.50	12 Months	31-Dec-21	2022	Wastewater Treatment Plant	10% completed
2	South Beirut Zones 2 and 3	Union of Southern Suburbs Municipalities	UNICEF	World Engineering and Technology (WET) Tel: 04/524221	788,703.02	4 Months	30-Jun-22	2022	Water distribution and Sewage Networks	65% completed
3	Construction of a Rectangular 400 m <sup>3</sup> Ground Reservoirs in Roumieh, Mount Lebanon	Beirut and Mount Lebanon Water Establishment	UNICEF	World Engineering and Technology (WET) Tel: 04/524221	695,730.30	4 Months	30-Jul-22	2022	Water Reservoir and distribution Network	10% completed
4										
Total Value of on going projects					2,683,794.82					

## iii. Completed Projects in GCC countries

PARALLEL CONTRACTING PROJECTS COMPLETED TILL 30 APRIL 2022 OUTSIDE LEBANON							
No.	Project	Project Location	Client	Consultant	Value ( \$ )	Year Completed	Type of Works
II- Projects Completed Outside Lebanon							
1	Rehabilitation of an infirmary in Chabaniyeh, Qatar	Qatar	General Engineering Technologies wll	GET	393,000.00	2014	Building Construction
2	Construction of a new Clinic Building in Daayan, Qatar	Qatar	General Engineering Technologies wll	GET	1,015,000.00	2015	Building Construction
3	Construction of sports club at Smysmeh, Qatar	Qatar	General Engineering Technologies wll	GET	11,395,000.00	2016	Building Construction
4	Infrastructure Works at the Coast Guard Base, Qatar	Qatar	General Engineering Technologies wll	GET	13,420,000.00	2017	Infrastructure works
5	UAE Dubai DEWA- Water and Waste Water and Sewage Treatment Plants and Pumping Stations Operation and Maintenance	UAE	Operfect Quality Transport LLC	DEWA	2,465,000.00	2017	Operation and Maintenance
Total Value of completed projects in GCC Countries					28,688,000.00		

**vi. Certificates of qualifications**

الجمهورية اللبنانية

وزارة الطاقة والمياه

المديرية العامة للموارد المائية والكهربائية

مصلحة التنفيذ

رقم الصادر : ٢٠٢١/١٣٠١

بيروت في : ٢٠٢١/٨/٢

جانب من يهمله الأمر

- الموضوع :** افادة تصنيف وعدم اقضاء ل شركة باراليل للمقاولات ش.م.ل. -  
**المرجع :** ١ - الطلب رقم ٢٠٢١/١٣٠١ تاريخ ٢٠٢١/٦/٢٥  
والوارد الى مصلحة التنفيذ بتاريخ ٢٠٢١/٦/٢٦ .  
٢ - قرار لجنة التصنيف - مياه - رقم ٢٤٥ تاريخ ٢٠١٧/١١/٦

ان عضو ومقرر لجنة تصنيف المتعهدين - مياه - في وزارة الطاقة والمياه  
المديرية العامة للموارد المائية والكهربائية - يفيد بان شركة باراليل للمقاولات ش.م.ل.  
مصنفة بموجب القرار رقم ٢٤٥ تاريخ ٢٠١٧/١١/٦ لصفقات تنفيذ  
الاشغال المائية - الجدول رقم ٣/أ - في الدرجة الاولى باستثناء السدود والأنفاق  
على اسم المهندسين خليل فريد صقر و/أو ولیم جورج الدیس  
وانها غير مقصاة عن الاشتراك في تنفيذ الصفقات المذكورة ، ولم يطرأ أي تعديل على تصنيفها  
لغاية تاريخه .  
وللبیان ، وبناء للطلب اعطيت هذه الافادة بتاريخ الثاني من شهر آب عام الفين وواحد وعشرين ./.

**ملاحظة ١ :** التأكيد على التقيد بالتعميم رقم ٢/ت.م. تاريخ ٢٠١٥/٢/١٩ الصادر عن  
جانب المدير العام ./.

**ملاحظة ٢ :** ان هذه الافادة صالحة لمدة سنة واحدة تبدأ من تاريخ اصدارها وذلك بناء  
على المذكرة الادارية رقم ٢٢/م. تاريخ ٢٠٠٠/٨/٢٢ ./.

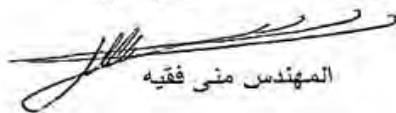
**ملاحظة ٣ :** ترفض الصور الفوتوكوبية غير المصدقة من مصدرها ./.

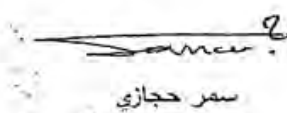
عضو ومقرر لجنة تصنيف المتعهدين - مياه -

المهندس

في وزارة الطاقة والمياه

رئيس مصلحة التنفيذ بالانابة

  
المهندس منى فقيه

  
سمر حجازي

  
٢ آب ٢٠٢١



الجمهورية اللبنانية  
وزارة الأشغال العامة والنقل  
المديرية العامة للطرق والمباني

كتاب رقم ٣٥ بتاريخ ٢٠٢١/٥/٢٦

### إفادة تصنيف وعدم اقضاء

جانب: شركة براليل للمقاولات ش.م.ل  
مهندسها : / خليل فريد صقر /

عملاً " بأحكام الفقرة الثالثة من المادة السادسة من  
المرسوم رقم ٣٦٨٨ تاريخ ٢٥ كانون الثاني سنة ١٩٦٦ .  
نبالغكم أن اللجنة المشكلة بموجب المادة الخامسة فقرة - أ -  
من المرسوم المذكور ، صنفتم بالقرار رقم / ١٧٣ /  
طريق تاريخ ٢٠١٢/١٠/١٩ في الجدول الأول الفئة - أ -  
الدرجة - الاولى - تنفيذ أعمال طرق .  
غير مقصي عن الالتزامات لغاية تاريخه .

رئيس لجنة التصنيف  
المدير العام للطرق والمباني بالتكليف

المهندس طانيوس بولس

٢٦ أيار ٢٠٢٢



مقرر اللجنة  
رئيس مصلحة الانشاءات بالتكليف

د. المهندس جبرائيل الحاج

٢٦ أيار ٢٠٢٢



الجمهورية اللبنانية  
وزارة الأشغال العامة والنقل  
المديرية العامة للطرق والمباني

الرقم : 44 تاريخ: 2022/5/19

إفادة تصنيف وعدم إقصاء

جانب : شركة براليل للمقاولات ش.م.ل.  
مهندسها : / خليل فريد صقر /

عملاً بأحكام الفقرة الثالثة من المادة السادسة من المرسوم رقم 3688 تاريخ  
25 كانون الثاني سنة 1966.

نبلغكم أن اللجنة المشكلة بموجب المادة الخامسة فقرة - ب- من المرسوم المذكور  
صلفتكم بالقرار رقم /159/ مياشي تاريخ 2016/3/17 في الجدول الثاني  
الفئة - أ - الدرجة الأولى - تنفيذ أعمال المباني.  
غير مقصي عن الالتزامات لغاية تاريخه.

رئيس لجنة التصنيف  
المدير العام للطرق والمباني بالتكليف

المهندس طانيوس بولس





## مجلس الإنماء والإعمار بيروت - لبنان

بيروت في ٢٣/٥/٢٠٢٢

الرقم: ١/١٩٨

### الى من يهمه الأمر

يفيد مجلس الإنماء والإعمار ان المتعهد "باراليل للمقاولات ش.م.ل." "Parallel Contracting S.A.L." هو حاليا ضمن لائحة المتعهدين اللبنانيين المؤهلين لتنفيذ مشاريع لدى المجلس وفق ما يلي:

- في فئة المباني تحت الرقم B481 للمشاريع التي تتراوح قيمتها بين مليون وخمسة ملايين دولار أميركي (Group 2).

- في فئة الاعمال المدنية تحت الرقم C268 للمشاريع التي تتراوح قيمتها بين مليون وخمسة ملايين دولار أميركي (Group 2).

وبناء للطلب اعطيت هذه الافادة.

رئيس مجلس الإنماء والإعمار  
نبيل عدنان الجسر  
٢١







No. 0071

## Recommended Applicator

We hereby refer:

H/S PARALLEL GROUP

as amongst our Recommended Applicators. (*Concrete Repair & Structural Strengthening*)

The recommended applicator mentioned above is engaged to attend our training seminars in and outside Lebanon and to constantly upgrade the professional skills along with the tools and equipment available.

This certificate has been released upon the recommend applicator.

It is valid until 6/13/2015

Sika Near East s.a.l. is not responsible for any misuse or improper execution of its sold materials.



**Sika** NEAR EAST s.a.l.

Sector 5, Road 70  
Sin el Fil - Jbeil el Baqra - PO Box 55 163 Beirut - Lebanon  
Tel.: ++961-1-510270 / 512372 Fax: ++961-1-510071  
e-mail: shurug@syria.sika.net.lb Website: www.sika.com



General Manager  
Fax: 01-510271

Construction Division Manager

CONSTRUCTION

vii. Certificate of financial capability



Thursday 13<sup>th</sup> August 2020

TO: UNICEF Lebanon  
SODECO, Sama Beirut Building, 5<sup>th</sup> floor  
Beirut, Lebanon

Attn: Supply Section

Project: LRPS-2020- 9160192 – LTA FOR WASH INFRASTRUCTURE  
REPAIR AND UPGRADE SERVICES

Subject: Bank Certificate of Financial capability

Dear Sirs,

To the best of our knowledge and belief, we hereby certify that Messrs. Parallel Contracting SAL, registered in the Commercial Register Offices under No. 2025699 Baabda, and having their offices at Zalqa, Saydeh Street, Samrani Tower, Bloc b, 6<sup>th</sup> Floor, at present has access to, or has available liquid assets, lines of credit, unencumbered assets and financial means, net of other commitments, sufficient to meet the construction cash flow of up to USD 1 million for a period of 6 months from this date. We also certify that Parallel Contracting SAL is solvent, not filed for bankruptcy and is not in a process of receivership of liquidation..

This letter has been issued upon the request of Messrs. Parallel Contracting SAL without any responsibility on our part.

**BSL BANK SAL**

Capital 54.165.000.000 L.L. Entièrement Libéré R.C.B. No. 12510 - Liste des Banques No. 68  
Rue Riad Solh, Imm BSL, B.P.: 11-957 Beyrouth - Liban  
Tel: 961 1 980 080 - Fax: 961 1 980 991 - info@bsl.com.lb - www.bsl.com.lb

13/8/2020  
BSL BANK SAL  
Agence  
Stephanie BOU KARAM  
ABOU ANTOUN  
Mazen EL MEDAWAR

ADM - 6 - F

viii. **Photos**

**Infrastructure**



**Water Supply Line from Dbaye to Dikwaneh, Lebanon**





**Al Khwair Sewer System, Oman**



Water reservoirs, Ground and elevated



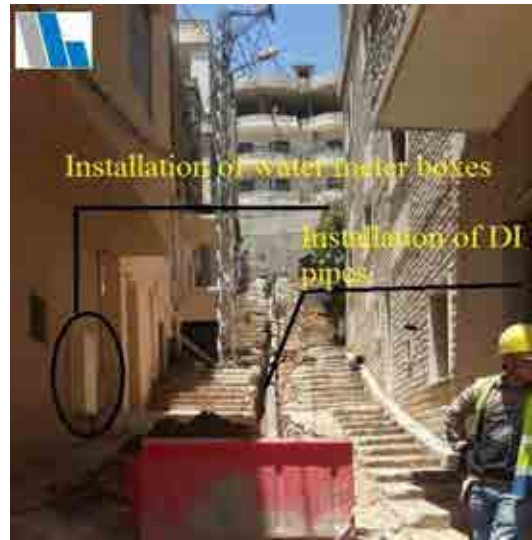








## Water Networks









Sanitary Sewers





**Building Construction**

**Finishing Works**



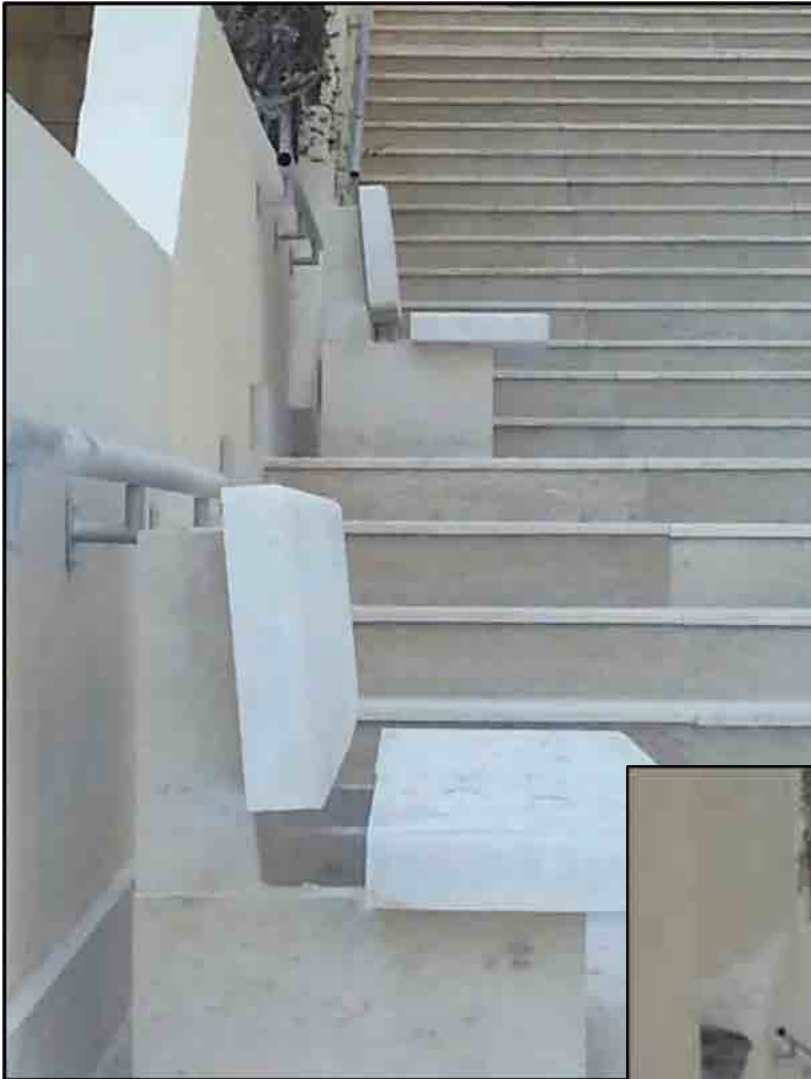


Concrete Repair



**Rehabilitation Works**

**Public Stairways**



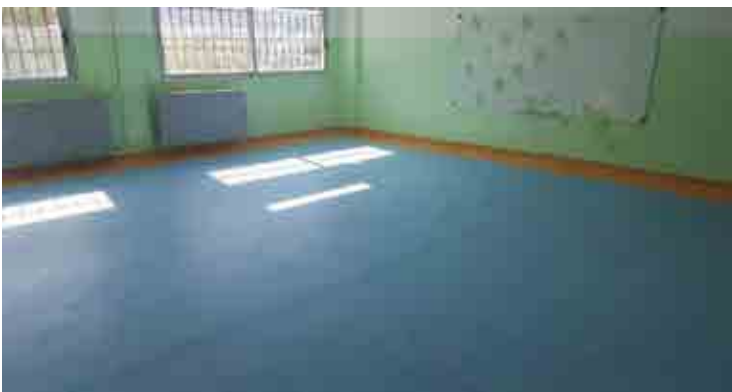
**Residences and villas**



Schools





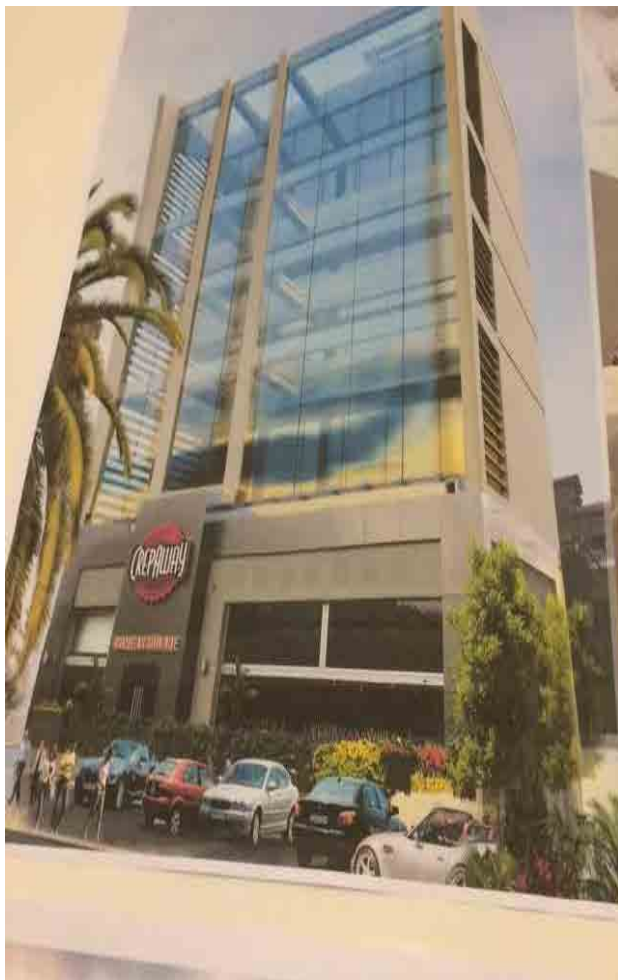






**Building Construction Works**







## Bridges

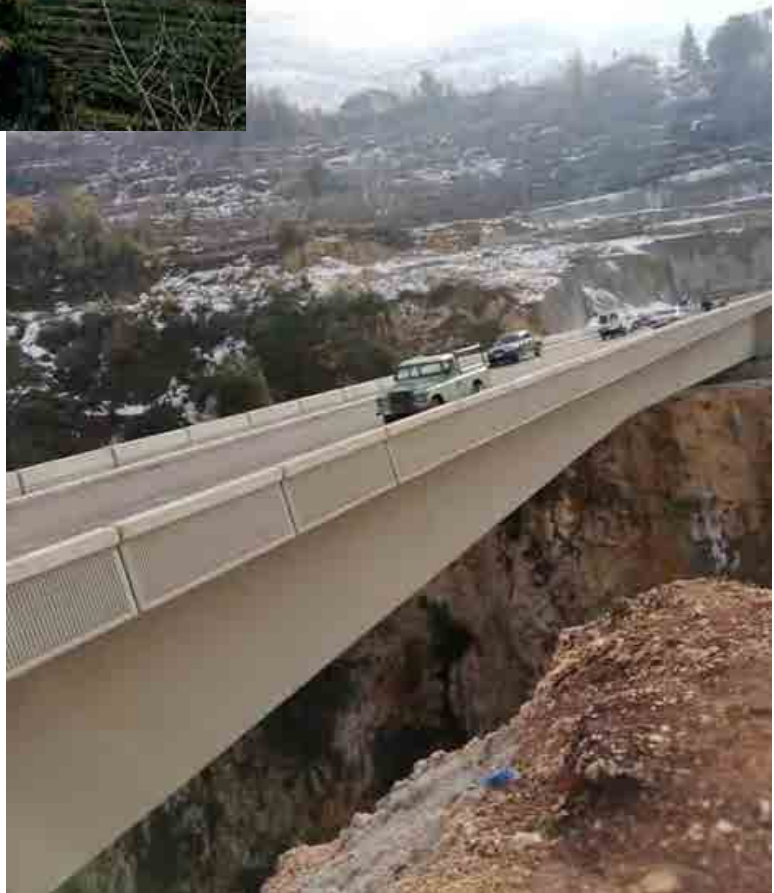
### Richmaya Bridge



**Qorsaita Bridge**







Sewage Treatment Plant (Wet Land)

